

MT-X1235 ST

TECHNICAL DATA SHEET

RK
ELEVACIONES



RK ELEVACIONES SRL

CASA CENTRAL
BUENOS AIRES - ESCOBAR
(0348) 4436600

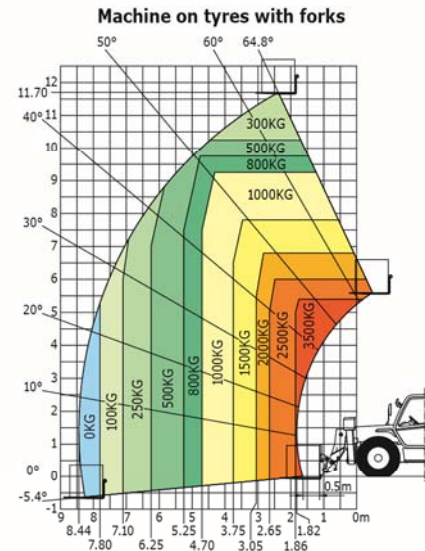
SUCURSAL MENDOZA
ZONA CUYO - MAIPU
(0261) 6217444

contacto@rkelevaciones.com.ar
www.rkelevaciones.com.ar

FICHA TÉCNICA

MT-X 1235 ST	
Lifting	
Max. capacity	3500 kg
Max. lifting height	12.00 m
Reach at max. height	1.20 m
Break-out force with bucket	7000 daN
Unladen time	
Lifting	10.6 secs
Lowering	7.7 secs
Extension	22.3 secs
Retraction	11.6 secs
Crowd	4.1 secs
Dump	3.3 secs
Tyres	400/80-24
Braking	hydraulic multiple-disk brake with oil bath on front and rear axles
Engine	
Type	PERKINS
Cubic capacity	1104D-44 TA
Power	4400 cm ³
Max. torque	101 HP/74.5 kW
Injection	410 Nm - 1400 rpm
Cooling	direct
Laden drawbar pull	water
Transmission	9540 daN
Reversing shift	torque converter
Number of gears (forward/reverse)	electrohydraulic control
Max. travel speed (may vary according to applicable regulations)	4/4
	27 kph
Hydraulics	
Pump	gear type with flow splitter
	106 l/min - 260 bar
Capacities	
Hydraulic oil	120 l
Fuel	135 l
Unladen weight (with forks)	9210 kg
Dimensions	
1. Front wheel centre to carriage	1.77 m
2. Ground clearance	0.45 m
3. Overall length to front tyres	4.39 m
4. Wheelbase	2.77 m
5. Rear wheel centre to rear face	1.05 m
6. Overall width of cab	0.95 m
7. Inside tyre width	1.99 m
8. Overall width	2.40 m
9. Overall width (stabilizers lowered)	2.32 m
10. Overall height	2.58 m
Turning radius (over tyres)	4.16 m
Carriage rotation (crowd/dump)	12°/112°
Noise and vibration	
Noise at driving position (LpA)	78 dB
Environmental noise (LwA)	106 dB
Vibration to whole hand/arm	<2.5 m/s ²
Vibration on driver's body	1.2 m/s ²

Rough terrain load chart
standard EN1459 B



Machine on stabilizers with forks

